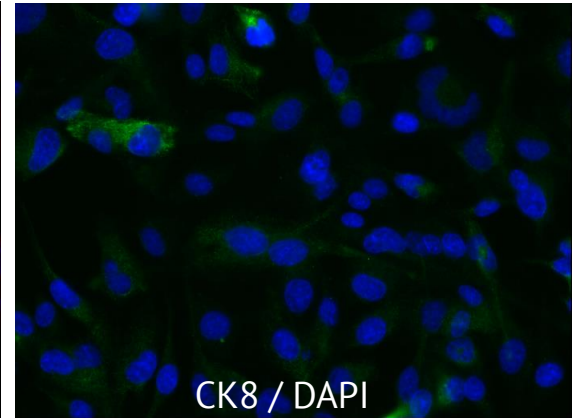
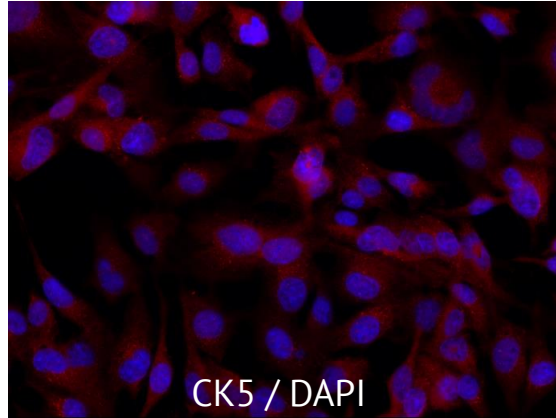
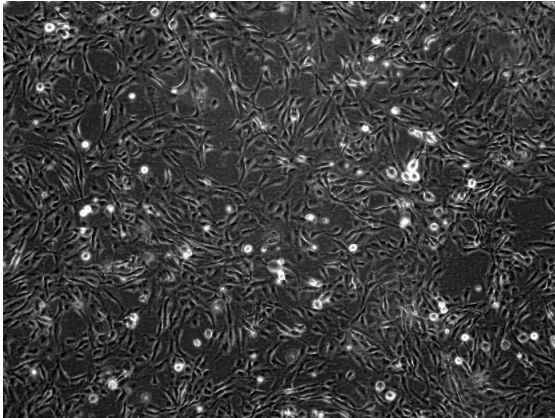


# hTEC/SVTERT24-B

## Morphology and marker expression

---



hTEC/SVTERT24-B cells show cell-cell contacts with expression typical epithelial markers (e.g. ZO-1 and E-Cadherin, not shown). The cells homogenously express keratin 5 (red fluorescence), whereas keratin 8 is expressed heterogeneously (green fluorescence). Cell nuclei are counterstained with DAPI (blue fluorescence).