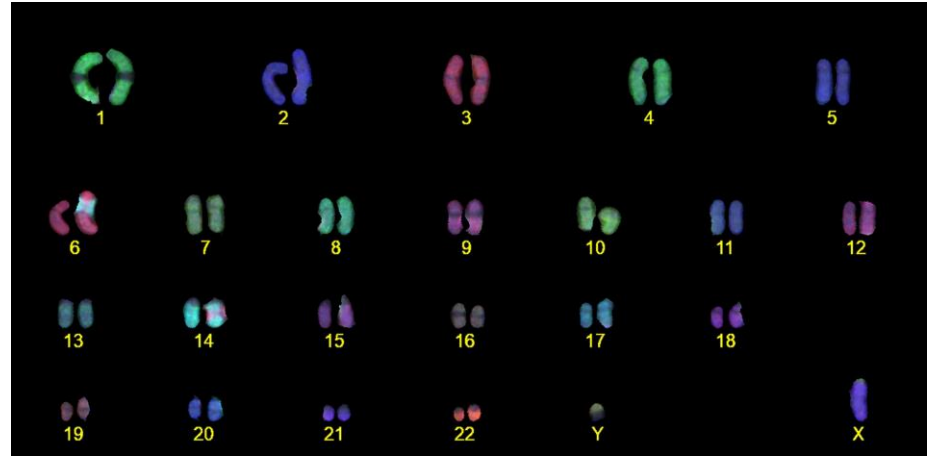
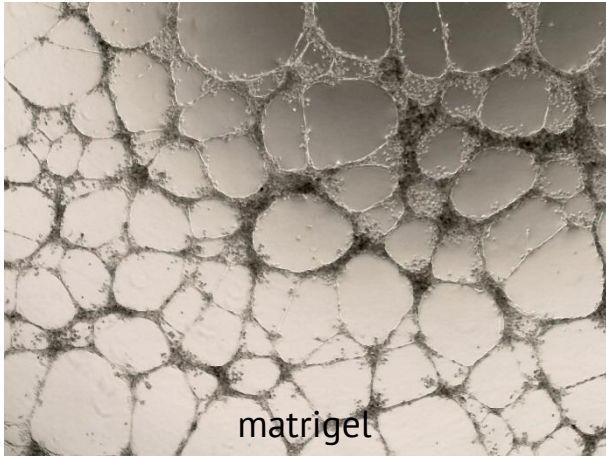


HUVEC/TERT66

Neo-angiogenic potential and karyotype analysis



When inoculated onto matrigel-matrix HUVEC/TERT66 cells form typical capillary like structures (left picture) demonstrating neoangiogenic potential. The cells show a normal, diploid karyotype (46, XY) as shown by COBRA FISH (right picture, kindly provided by Sheena Ong, Leiden University Medical Center).