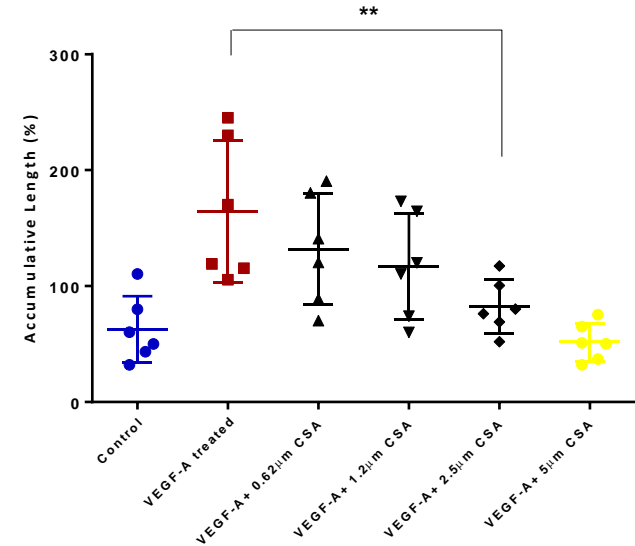
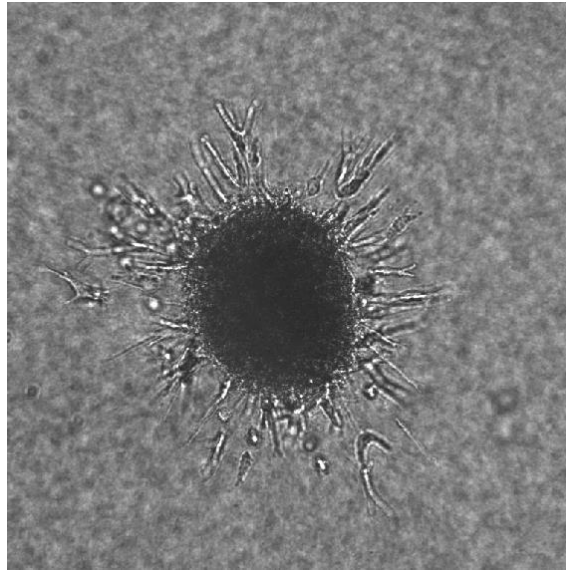


HUVEC/TERT2

Monitoring sprout formation upon drug treatment



HUVEC/TERT2 cells are grown as spheroids in hanging drops followed by embedment into a semi-solid matrix. After treatment of these spheroids with vascular endothelial cell growth factor (VEGF), formation of sprouts is induced, which is inhibited by cultivation in the presence of cyclosporin A (CSA) in a concentration dependent manner.