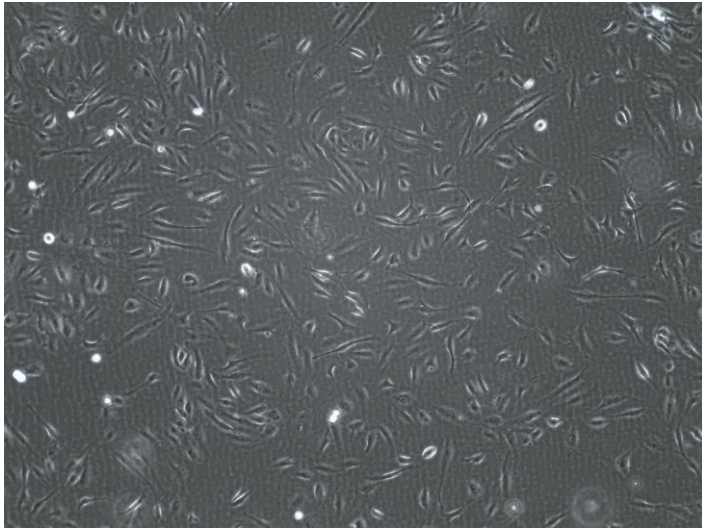


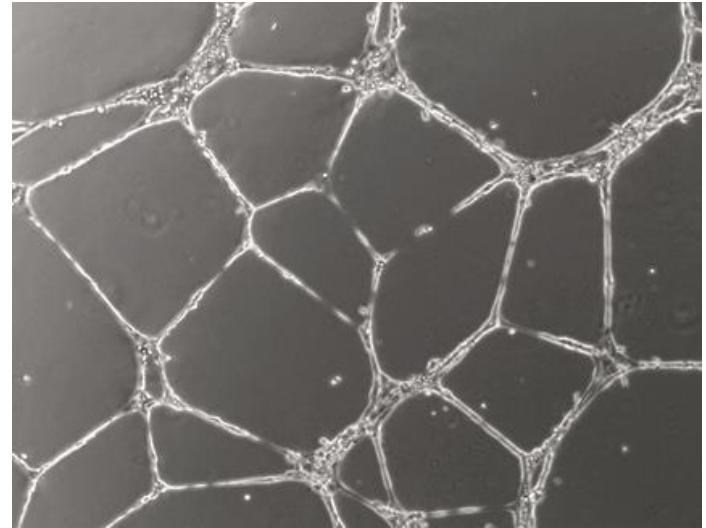
HDMVEC/TERT164-B



Morphology and differentiation on Matrigel



Dermal microvascular endothelial cells
HDMVEC/TERT164-B are characterized by
the typical endothelial morphology.



HDMVEC/TERT164-B cells form tubule-like
structures when inoculated onto matrigel
matrix indicating neo-angiogenic
properties.