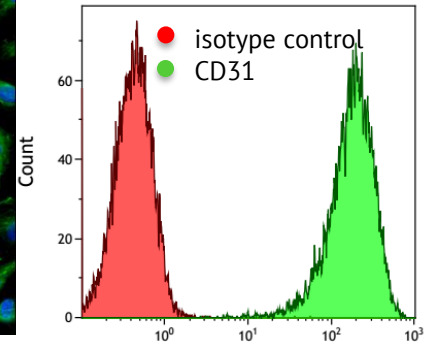
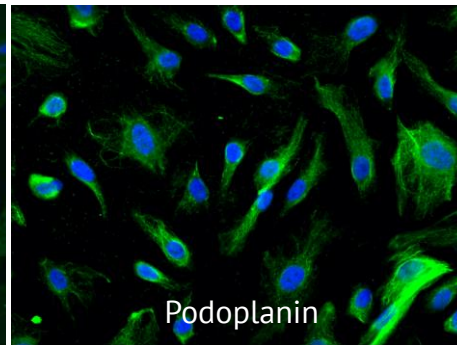
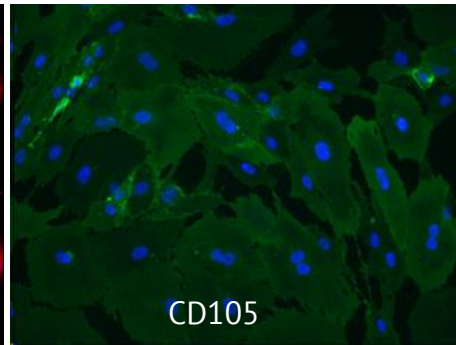
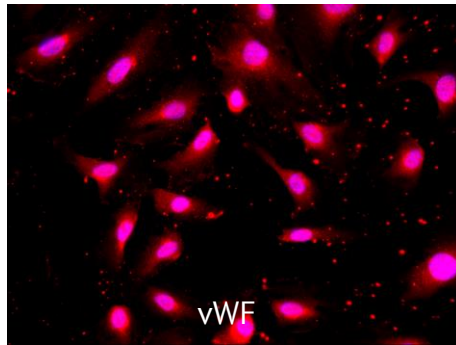


HDMVEC/TERT164-B

Expression of typical markers and functions



HDMVEC/TERT164-B cells homogenously express typical marker proteins of lymphatic microvascular endothelial cells such as von Willebrand factor (vWF), CD105, podoplanin as demonstrated by immunofluorescence stainings (cell nuclei are counterstained with DAPI / left pictures) and CD31 as demonstrated by flow cytometry (cells stained with isotype-control antibody as negative control for flow cytometric analysis / right picture).