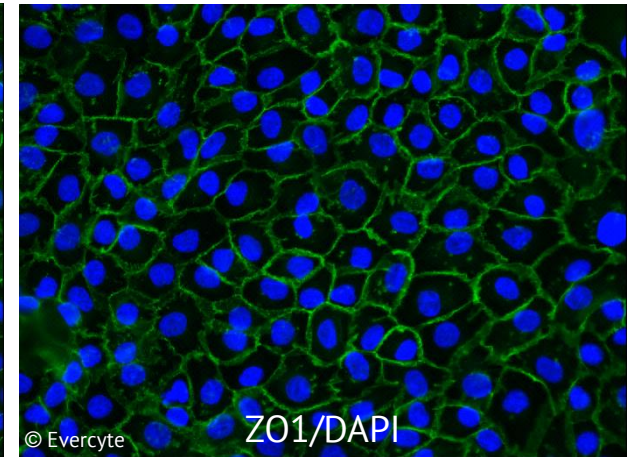
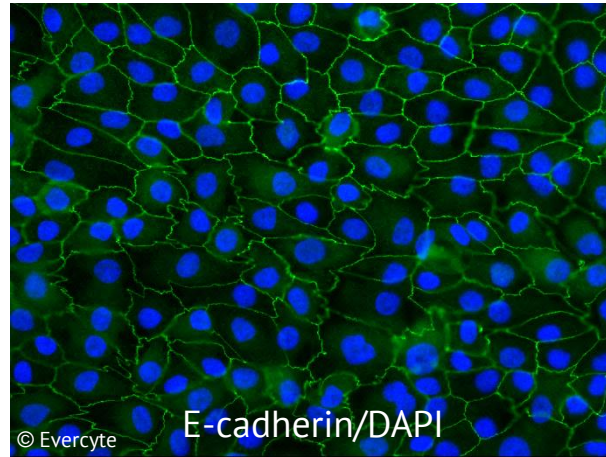
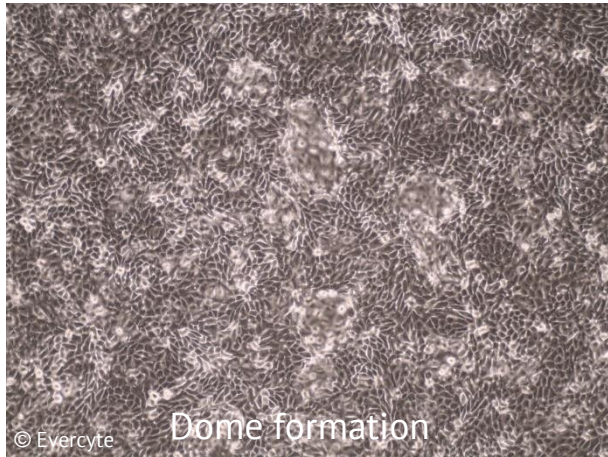


# RPTEC/TERT1

## Morphology and expression of marker proteins

---



RPTEC/TERT1 cells are characterized by the typical epithelial morphology and formation of domes when grown to high cell densities, which demonstrates active transport of water from the apical to the basolateral side. Moreover, the cells form continuous belts of E-cadherin and ZO-1 at cell-cell contacts.