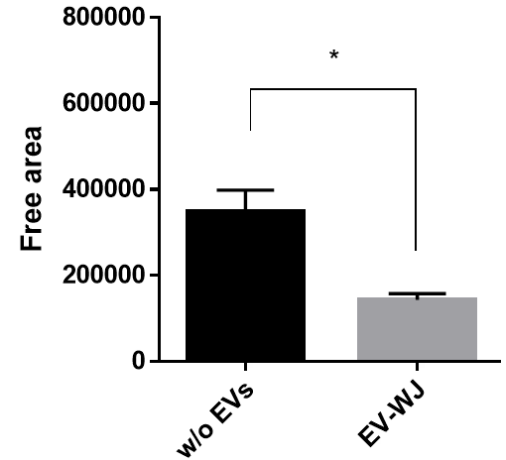
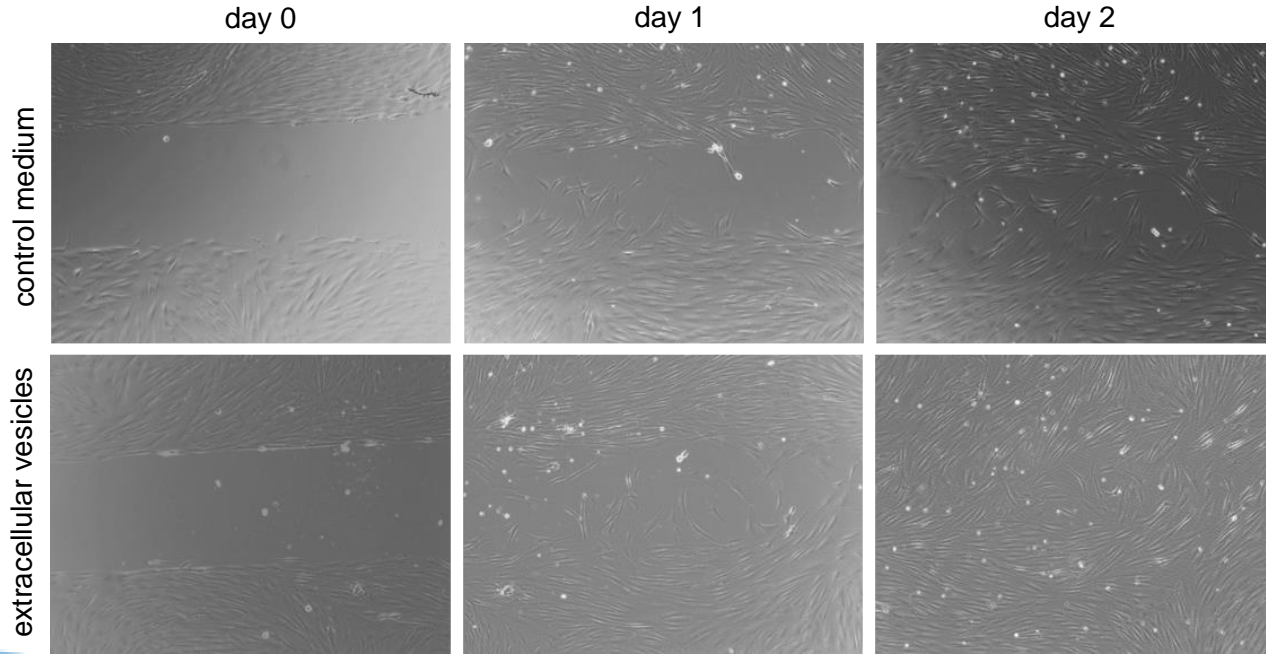


Extracellular vesicles from WJ-MSC/TERT273

Influence of EVs on fibroblasts migration



fHDF/TERT166 were seeded into chamber slides and a physical gap within the monolayer was created followed by monitored the process of cell migration into the gap. Significantly less free area between the cells was detected upon addition of extracellular vesicles from mesenchymal stem cells (WJ-MSC/TERT273).