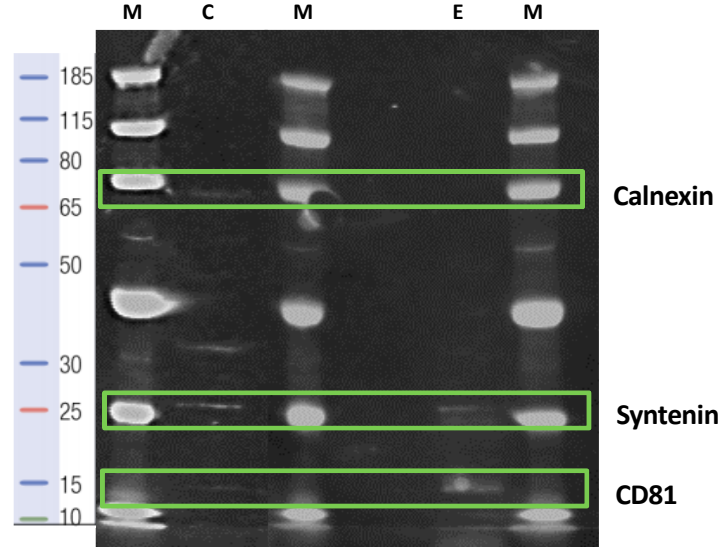
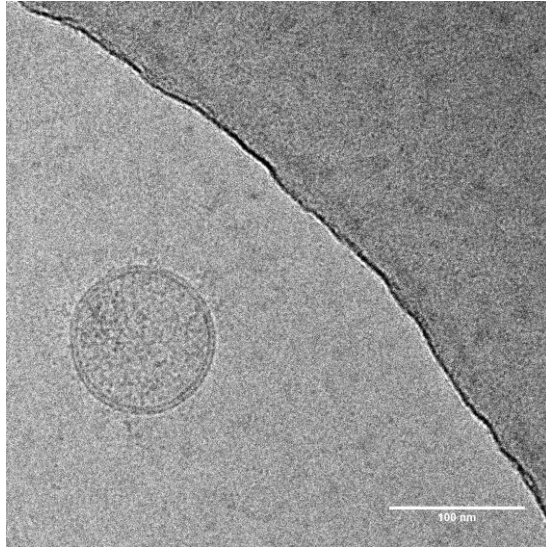


Extracellular vesicles from WJ-MSC/TERT273

Electron microscopy, western blotting of EVs



Extracellular vesicles from WJ-MSC/TERT273 cells show the characteristic lipid double layer membrane (cryo-EM) and typical marker proteins such as syntenin and CD81 are detected, whereas calnexin is only present in cell lysates (western blotting).