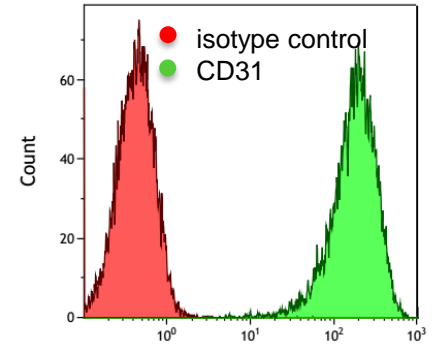
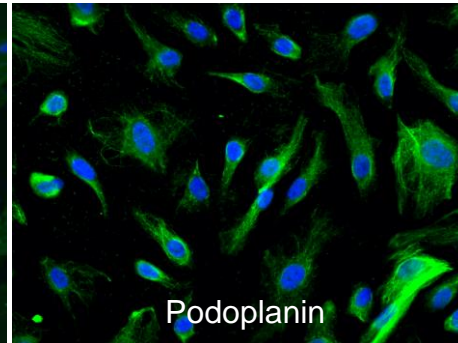
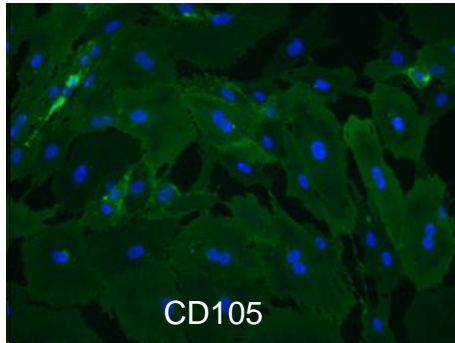
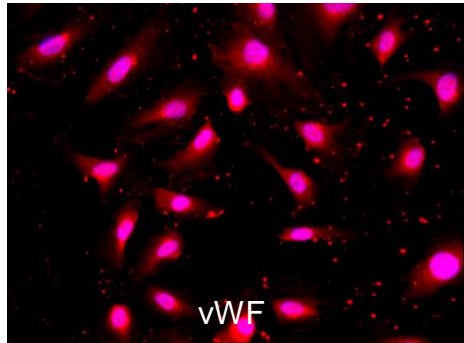


HDMVEC/TERT164-B

Expression of typical markers and functions



HDMVEC/TERT164-B cells homogenously express typical marker proteins of lymphatic microvascular endothelial cells such as von Willebrand factor (vWF), CD105, podoplanin and CD31 as demonstrated by immunofluorescence stainings (cell nuclei are counterstained with DAPI / left pictures; cells stained with isotype-control antibody as negative control for flow cytometric analysis / right picture).