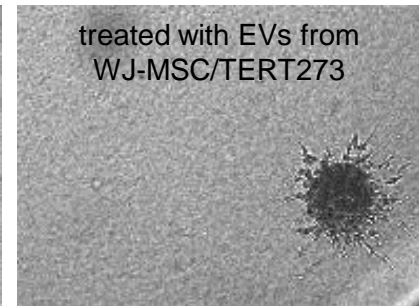
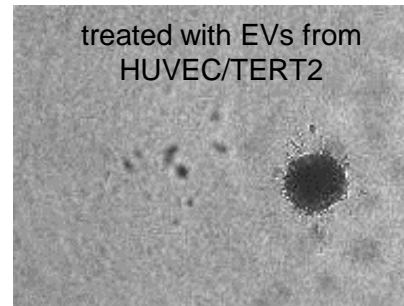
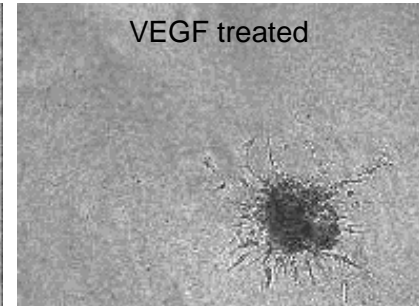
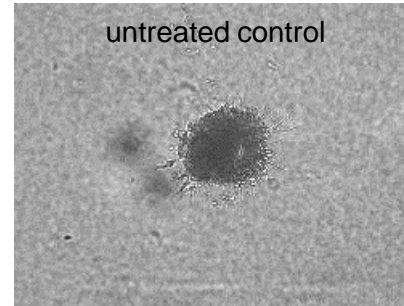


Extracellular vesicles from WJ-MSC/TERT273 Influence on neo-angiogenesis



Treatment of endothelial cell spheroids embedded in a semi-solid matrix with extracellular vesicles from WJ-MSC/TERT273 cells induces sprout formation similar as vascular endothelial growth factor (VEGF) indicating neo-angiogenic properties of EVs.